

# Optos Optomap Integration Configuration

---



## Integration Details:

We will create a buttons in your records section that will open up the Optomap Review software to the patient you have open in Crystal. This will open up to all of the patient's current and previous eye images contained in the Optos database. The only catch here is that the Patient ID in Optos has to match the Patient's Account ID in Crystal. This Account ID can be changed in Optos but cannot be changed in Crystal. This means that you will need to change all of the Patient ID numbers in Optos to match each patient's Account ID in Crystal.

## Creating a Patient in Optos:

If you are wanting to create a new patient in the Optos system through Crystal, you can do so through the Optos Capture or Optos Scheduler software. To do this, you will need to add a button to the records section of Crystal that, when clicked, opens up the Optos Capture or Optos Scheduler software. This integration will create a patient in Optos to have the same name, DOB, Account ID, and sex as the patient in Crystal with a single click. After creating the patient in the Optos Capture or Optos Scheduler, this patient will show up in the Optos Database.

## Adding Optos Images into Crystal:

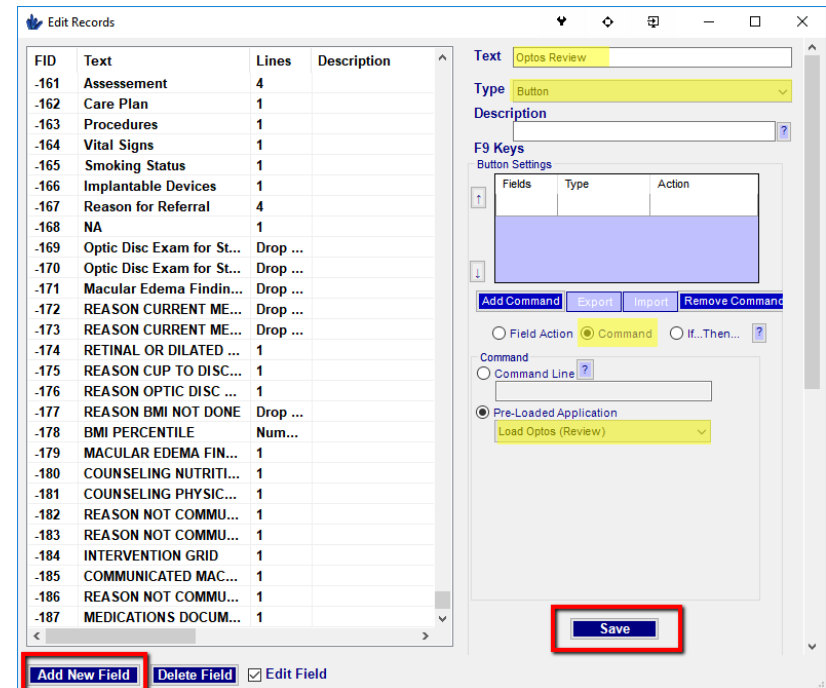
This integration will not save images into Crystal automatically. The goal of this integration is to remove the need for adding the patient's images into the Crystal database. If you are needing to add them to Crystal, you have two options. Option 1: Export images from Optos to a folder on your computer and manually add them to the patient's file section or pics section in Crystal. Option 2: Use the Crystal PM PDF printer to add in PDF images to the patients file section.

# Optos Optomap Integration Configuration

## OPTOMAP REVIEW BUTTON CONFIGURATION

### CREATE A BUTTON IN THE RECORDS SECTION

1. Open a Patient record inside Crystal
2. At the top of Crystal, click on EHR Settings, then choose Edit Medical Record Templates
3. In the Edit Records Window:
  - a. Click on **Add New Field**
  - b. Set the **Text** to **Optos Review**
  - c. Set the field **Type** to be a **Button**
  - d. In the button settings, choose **Command** then choose the **Pre-Loaded Application** option
  - e. In the drop-down, choose **Load Optos (Review)**
  - f. **Click Save**
4. On the Records Page:
  - a. Navigate to the tab you want your button to be placed on
  - b. Right click in a blank area and choose Add Field to Tab
  - c. Drag this field to where you want it to go
  - d. Click on Stop Editing and Save Changes To Database
5. Continue to the button linking instructions found on the next page:



# Optos Optomap Integration Configuration

---



## **LINKING THE OPTOS REVIEW BUTTON TO OPTOS**

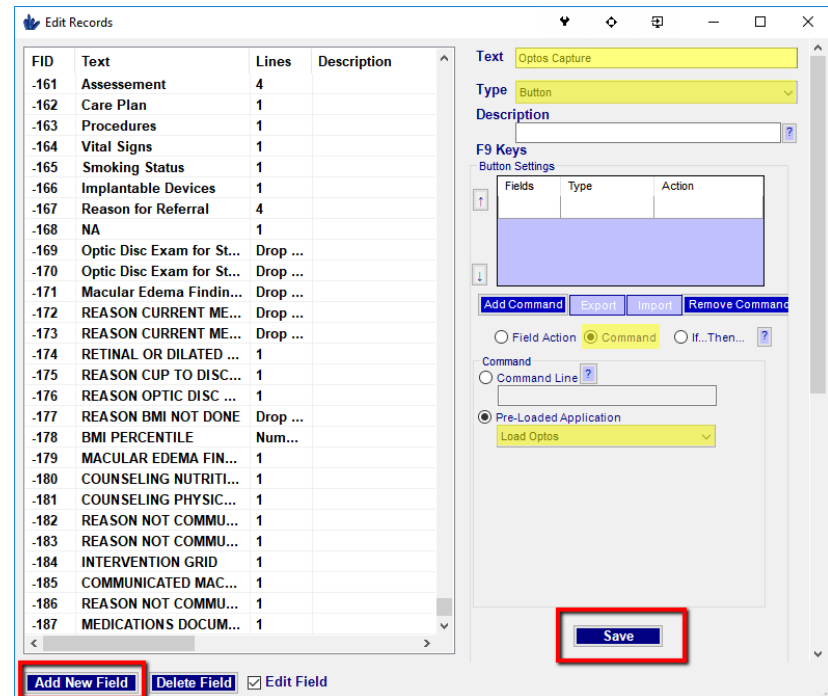
1. Open records back up to a patient and navigate to your Optos Review Button you just placed on your template and click on it
2. A window will open up asking you to browse to the Review.exe executable file.
3. Navigate to the following file path:
  - a. C:\Program Files (x86)\Optos\Optomap Applications\  
*If your computer does not have Program Files (x86), the file will be in the following location:*
  - b. C:\Program Files\Optos\Optomap Applications\
4. In the Optomap Applications folder, you will see the Review.exe (blue icon) located at the bottom
  - a. Click on this and then click Open
5. A box will pop up saying the file path you have chosen, click OK
6. This button is now linked inside of Crystal.
  - a. You will need to repeat this process on all computers that have Crystal and the Optomap Review Software.

# Optos Optomap Integration Configuration

## OPTOMAP CAPTURE/SCHEDULER BUTTON CONFIGURATION

### CREATE A BUTTON IN THE RECORDS SECTION

1. Open a Patient record inside Crystal
2. At the top of Crystal, click on EHR Settings, then choose Edit Medical Record Templates
3. In the Edit Records Window:
  - a. Click on **Add New Field**
  - b. Set the **Text** to **Optos Capture**
  - c. Set the field **Type** to be a **Button**
  - d. In the button settings, choose **Command** then choose the **Pre-Loaded Application** option
  - e. In the drop-down, choose **Load Optos**
  - f. **Click Save**
4. On the Records Page:
  - a. Navigate to the tab you want your button to be placed on
  - b. Right click in a blank area and choose Add Field to Tab
  - c. Drag this field to where you want it to go
  - d. Click on Stop Editing and Save Changes To Database
5. Continue to the button linking instructions found on the next page:



# Optos Optomap Integration Configuration

---



## **LINKING THE OPTOS CAPTURE BUTTON TO OPTOS**

1. Open records back up to a patient and navigate to your Optos Capture Button you just placed on your template and click on it
2. A window will open up asking you to browse to the executable file.
3. Navigate to the following file path:
  - a. C:\Program Files (x86)\Optos\Optomap Applications\  
*If your computer does not have Program Files (x86), the file will be in the following location:*
  - b. C:\Program Files\Optos\Optomap Applications\
4. In the Optomap Applications folder:
  - a. If you have the Optomap Capture software, you will see the Capture.exe (Red icon) located at the bottom
    - i. Click on this and then click Open
  - b. If you have the Scheduler software, there may be no executable file which shows up in the Optomap Applications folder, in this case click on the file name text box and type in Scheduler.exe and click Open
5. A box will pop up saying the file path you have chosen, click OK
6. This button is now linked inside of Crystal.