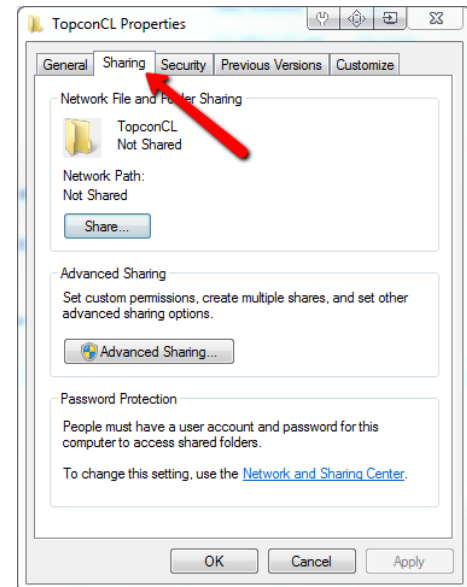


TOPCON AUTOREFRACTOR LAN DATA EXPORT SETTINGS

COMPUTER CONFIGURATION

CREATE SHARED FOLDER

1. Create a folder on the Local Disk called "TopconAR" (C:\TopconAR)
2. Right-Click on the folder and choose Properties
3. Click on the Sharing tab
 - a. Click Share
 - b. In the dropdown menu choose Everyone then click Add
 - c. Change the Permission Level for Everyone to Read/Write
 - d. Click Share



FIND COMPUTER'S NETWORK SETTINGS

1. Open the Command Prompt
2. In Command Prompt type in ipconfig then press Enter
3. Write down the following:
 - a. IPv4 Address
 - b. Subnet Mask
 - c. Default Gateway

TOPCON AUTOREFRACTOR LAN DATA EXPORT SETTINGS

MACHINE SETTINGS

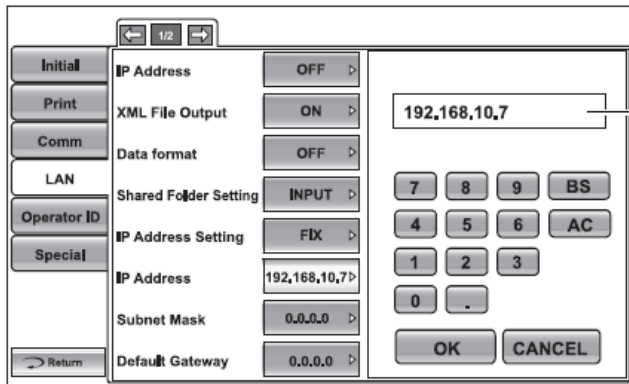
KR-800S SETTINGS



1. Go Settings
2. Choose LAN Settings
 - a. LAN connection: ON
 - b. Shared folder setting: Press INPUT
 - i. Shared Folder: \\[IP address of shared folder]\\[shared folder name]
i.e. \\192.168.1.10\TopconAR
 - ii. User Name: Username of Shared Folder Computer (Leave blank if shared with everyone)
 - iii. Password: Password for Computer (Leave blank if shared with everyone)
 - c. IP address setting: AUTO
 - d. IP address: IP address of RM/KR (Leave blank when set to AUTO)
 - e. Subnet Mask: Office Subnet (Leave blank when set to AUTO)
 - f. Default gateway: Type in the Default Gateway found on the computer
 - g. Primary DNS: Leave Blank
 - h. Secondary DNS: Leave Blank

TOPCON AUTOREFRACTOR LAN DATA EXPORT SETTINGS

RM/KR-800 SETTINGS



Description	Options	Details	Initial value
IP Address	OFF	LAN connection is off.	OFF
	ON	LAN connection is on.	
XML File Output	OFF	XML file is not output.	OFF
	ON	XML file is output.	
Data format	OFF	Data is not output.	OFF
	STD2	REF/KRT data are output in TOPCON STD2 format	
	STD4	REF/KRT data are output in TOPCON STD4 format	
Shared Folder Setting	Shared Folder (up to 32 characters) User Name (up to 32 characters) Password (up to 16 characters) Set by keyboard display	Path and permission to shared folder is set.	NONE
IP Address Setting	FIX	Assign IP address manually.	FIX
	AUTO	Assign IP address automatically.	
IP Address	0.0.0.0 Set by ten-key display.	IP address of PC to output data.	NONE
Subnet Mask	0.0.0.0 Set by ten-key display.	Subnet mask address of RM-800/KR-800.	NONE
Default Gateway	0.0.0.0 Set by ten-key display.	Default gateway address of RM-800/KR-800.	NONE
Primary DNS Server	0.0.0.0 Set by ten-key display.	Primary DNS Server number.	NONE
Secondary DNS Server	0.0.0.0 Set by ten-key display.	Secondary DNS Server number.	NONE

1. Go Settings
2. Choose LAN Settings
 - a. LAN connection: ON
 - b. XML File Output: ON
 - c. Data Format: OFF
 - d. Shared folder setting: Press INPUT
 - i. Shared Folder: \\[IP address of shared folder]\[shared folder name]
i.e. \\192.168.1.10\TopconAR
 - ii. User Name: Username of Shared Folder Computer
 - iii. Password: Password for Computer
 - e. IP address setting: FIX
 - f. IP address: Set to any available IP Address
 - g. Subnet Mask: Type in the Subnet Mask found on the computer
 - h. Default gateway: Type in the Default Gateway found on the computer
 - i. Primary DNS: Leave Blank
 - j. Secondary DNS: Leave Blank