



0 Retinal Imaging Examination

We at Pearland Eye Care are pleased to provide our patients with an advanced Digital Retinal Imaging Exam. This Retinal Imaging Examination is a high-resolution screening image of your retina which will help us document, review, and compares your retina over time. We will use this Retinal Imaging Exam to document a baseline image for your records, screen for eye 1005 diseases and improve our ability to view your internal retinal health at a much higher resolution than a slit lamp or ophthalmoscope.

We are concerned about retinal problems such as macular degeneration, glaucoma, retinal tears, detachments, diabetic retinopathy, etc. (all of which can lead to partial loss of vision or blindness). Additionally, many symptoms of systemic diseases such as diabetes and the effects of high blood pressure can be detected with this Retinal Imaging Examination.

You can expect from this exam:

- An annual eye wellness Digital Retinal Imaging Photograph
- An in-depth view of the retinal surface (where many eye diseases first manifest)
- The ability to review the images with you (we will show you your retina)
- A permanent record for your medical file, for serial analysis, comparisons, and diagnosis over time
- To be fast, safe, easy and comfortable
- Usually no dilation drops for the test (we will inform you if they are required)

Since insurance will only pay for retinal photos after eye disease is discovered this procedure is and out-of-pocket expense. The charge for the exam is \$30.00 to the basic eye exam you are receiving today.

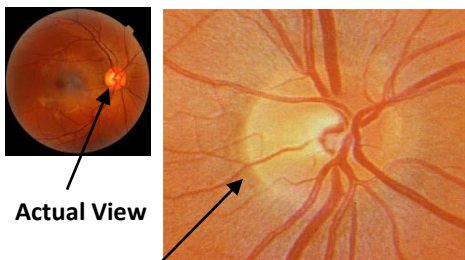
Doctor Tran strongly recommend this procedure for all of their patients. **Please select one of the following boxes.**

I AGREE TO have my retinal health evaluated with the Retinal Imaging Exam.

I DO NOT wish to have the Retinal Imaging Exam. I understand that I will still have a thorough eye examination with slit lamp observation.

Patient Signature

Date



This Nerve Head can be viewed larger with the RI Exam

