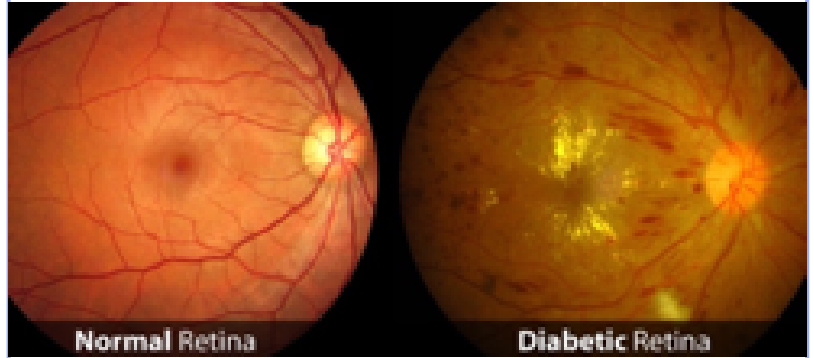


## FUNDUS PHOTOGRAPHY | \$64.00 | VISUAL FIELD SCREENING |

### FUNDUS PHOTOGRAPHY

A special high-resolution camera to take a photograph of the interior surface of the eye which includes retina, optic disc, macula and posterior pole (i.e. the fundus)  
Used to diagnose, detect, manage and monitor progression of diseases.

***It is especially important for people with personal/family history of high prescriptions, high blood pressure, diabetes, retinal/macular diseases, flashing lights, or floaters..***



LEFT: Normal Retina Fundus Photo. Patient saw 20/20 in both eyes at time of visit with NO symptoms.  
RIGHT: Bleeding in Retina: Patient saw 20/20 in both eyes at time of visit with NO symptoms.

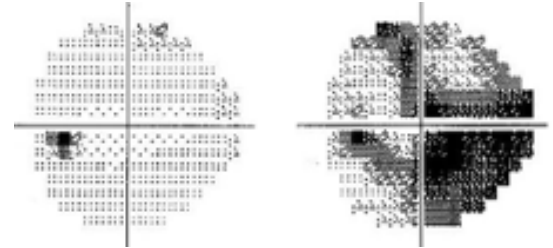
### VISUAL FIELD SCREENING

Frequency Doubling Technology ( FDT ) is a computerized test that is used for fast and effective detection of visual field loss

***Peripheral (side vision) and Central Field.***

It offers a high sensitivity and specificity in detection: ***Glaucoma damage, Macular Degeneration***

Other disorders: *Ocular, Retinal, Neurological and Neuro-ophthalmological causes (HEADACHES)*



LEFT: Normal Visual Field. Patient saw 20/20 with NO symptoms.  
RIGHT: Peripheral Visual Field Defect. Patient saw 20/20 with NO symptoms.

### DILATION | \$30.00 |

Procedure in which medication in the form of drops is instilled in the eyes to enlarge the pupil 20 minutes to take effect – Duration 3-4 hours  
Examine the back of the eye through a larger window.

#### **COMMON SIDE EFFECTS:**

Temporary light sensitivity ( Light sensitivity is usually alleviated by sunglasses )  
Loss of the ability to focus at Near, Distance vision is usually not affected

***\*\*If you do not have any sunglasses, a disposable pair will be provided for you. However, if you have any concerns about driving, arrangements can be made to reschedule for a more convenient time\*\****

### EXTERNAL PHOTOGRAPHY | \$35.00 MEIBOGRAPHY

High Resolution images/ video that shows the front part of the eye : ***Cornea, Lens, Iris, Eyelids***  
Used to diagnose and treat a variety of diseases and infections (***ie: Red Eyes, Dry Eyes, Cataracts.***)  
A special infrared light source helps aid in the detection of ***Meibomian Gland Dysfunction.***



**Normal Eyelid (meibomian) Glands:**  
Meibomian glands produce the oils needed for a healthy tear film

**Gland (oil) Dropout:**  
MGD occurs when the meibomian glands become blocked. If this blockage is left untreated the gland will drop out entirely.

*Eye Care by Dr. J. J. J.*